

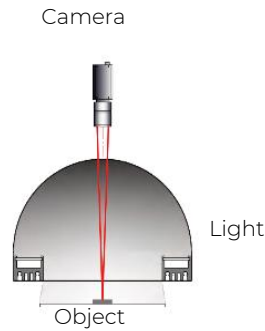
# Tunneled Light Series

V2.2



## Applications

- Surface defects inspection on metal surface
- Inspection of PCB boards
- Detection of tabs on battery cells



Scattered illumination with high uniformity for large-field objects.

## Technical specifications

<b>Light color</b>	White (W)	6500 – 8500K	
<b>Connector</b>	JST-SMR-03V-B		1 : +24V 2: NC 3: GND
<b>Operating environment</b>	Temperature	0~40 °C	
	Humidity	20~85 %	
<b>Certification</b>	CE / RoHS		
<b>Accessories</b>	VA-CABLE-MVL-FCB3-1m	1 meter extension cable	
	VA-CABLE-MVL-FCB3-3m	3 meter extension cable	
	VA-CABLE-MVL-FCB3-OE-3m	3 meter open end cable	
	VA-CABLE-MVL-FCB3-5m	5 meter extension cable	
<b>Compatible Power Supply (Dimmable/ Trigger)</b>	VA-PS2-A4-60W-24V	Analog 4 Channel / 24V / Total 60W / Max. 36W per channel	
	VA-PS2-A2-150W-24V	Analog 2 Channel / 24V / Total 150W / Max. 72W per channel	
	VA-PS2-A4-150W-24V	Analog 4 Channel / 24V / Total 150W / Max. 48W per channel	
	VA-PS5-D4-150W-24V	Digital 4 Channel / 24V / Total 150W / Max. 72W per channel	

The information provided in this documentation contains general descriptions and/or technical characteristics of the performance of the products contained herein. This documentation is not intended as a substituted for and is not to be used for determining suitability or reliability of these products for specific user applications. It is the duty of any such user or integrator to perform the appropriate and complete risk analysis, evaluation, and testing of the products with respect to the relevant specific application or use thereof. Neither GeT Cameras nor any of its affiliates or subsidiaries shall be responsible or liable for misuse of the information contained herein or incorrect information in this document.

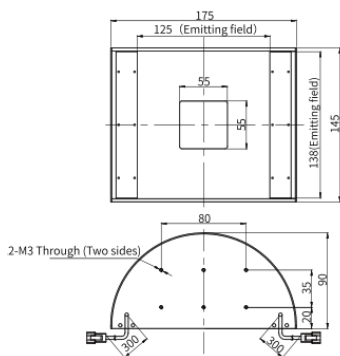
## Product table

Model	Color	Voltage	Power (W)*	Dimensions (mm)	Weight (gram)	Express Stock
VA-TL1-138-125	W	24V	15	175x145x90	500	No
VA-TL1-183-118	W	24V	18	187x160x105	600	No
VA-TL1-198-143	W	24V	25	210x190x130	800	No
VA-TL1-227-113	W	24V	25	289x160x105	700	No
VA-TL1-438-113	W	24V	42	480x160x105	3400	No
VA-TL1-688-63	W	24V	50	700x550x400	8900	No

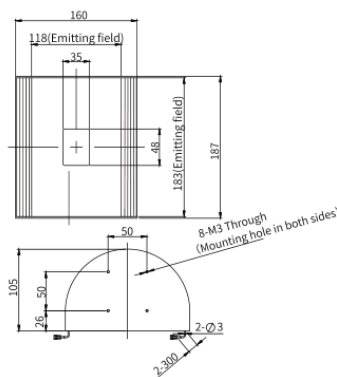
\*Tolerance +/- 10%

## Technical drawing

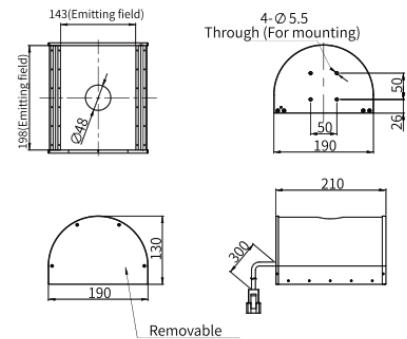
**VA-TL1-138-15**



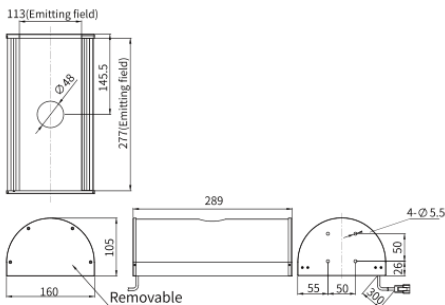
**VA-TL1-183-118**



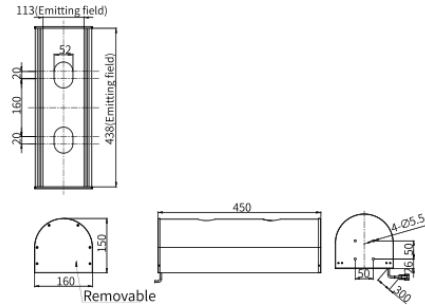
**VA-TL1-198-143**



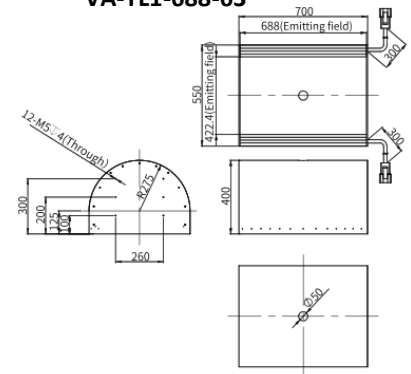
**VA-TL1-227-113**



**VA-TL1-438-113**



**VA-TL1-688-63**



The information provided in this documentation contains general descriptions and/or technical characteristics of the performance of the products contained herein.

This documentation is not intended as a substituted for and is not to be used for determining suitability or reliability of these products for specific user applications.

It is the duty of any such user or integrator to perform the appropriate and complete risk analysis, evaluation, and testing of the products with respect to the relevant specific application or use thereof. Neither GeT Cameras nor any of its affiliates or subsidiaries shall be responsible or liable for misuse of the information contained herein or incorrect information in this document.

## Product number

<b>VA – TL1</b>	-	<b>Size</b>	-	<b>Color</b>
		138-125		W
		183-118		
		198-143		
		.....		