

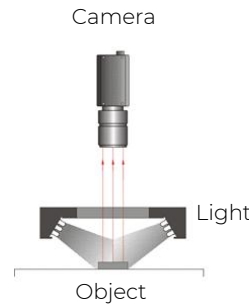
# Ring Light Dark Field Series

V2.3



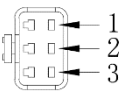
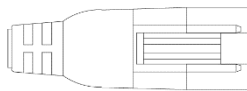
## Applications

- Surface defects inspection on metal surface
- Edge detection of metal objects
- PCB components positioning



Direct illumination for small objects or where installation space is limited.

## Technical specifications

<b>Light color</b>	White (W)	6500 – 8500K
	Red (R)	620 – 630nm
	Green (G)	520 – 530nm
	Blue (B)	460 – 475nm
	Infrared (IR)	On request
	Ultraviolet (UV)	On request
<b>Connector</b>	JST-SMR-03V-B (FCB-3)	 
		1 : +24V 2: NC 3: GND
<b>Operating environment</b>	Temperature	0~40 °C
	Humidity	20~85 %
<b>Certification</b>	CE / RoHS	
<b>Accessories</b>	VA-CABLE-MVL-FCB3-1m	1 meter extension cable
	VA-CABLE-MVL-FCB3-3m	3 meter extension cable
	VA-CABLE-MVL-FCB3-OE-3m	3 meter open end cable
	VA-CABLE-MVL-FCB3-5m	5 meter extension cable
<b>Compatible Power Supply (Dimmable/ Trigger)</b>	VA-PS2-A4-60W-24V	Analog 4 Channel / 24V / Total 60W / Max. 36W per channel
	VA-PS2-A2-150W-24V	Analog 2 Channel / 24V / Total 150W / Max. 72W per channel
	VA-PS2-A4-150W-24V	Analog 4 Channel / 24V / Total 150W / Max. 48W per channel
	VA-PS5-D4-150W-24V	Digital 4 Channel / 24V / Total 150W / Max. 72W per channel



The information provided in this documentation contains general descriptions and/or technical characteristics of the performance of the products contained herein. This documentation is not intended as a substituted for and is not to be used for determining suitability or reliability of these products for specific user applications. It is the duty of any such user or integrator to perform the appropriate and complete risk analysis, evaluation, and testing of the products with respect to the relevant specific application or use thereof. Neither GeT Cameras nor any of its affiliates or subsidiaries shall be responsible or liable for misuse of the information contained herein or incorrect information in this document.

## Product table

Model	Color ○ ● ● ●	LED Rows	Voltage	Angle	Power (R)*	Power (W)*	Power (B/G)*	Dimensions (mm)	Weight (gram)	Express Stock
VA-RLDF3-50-30	W/R/G/B	2	24V	30	1.8	2.6	2.6	50x24x16	53	No
VA-RLDF3-66-30	W/R/G/B	3	24V	30	4.4	4.4	4.4	66x30x22	122	No
VA-RLDF3-74-30	W/R/G/B	2	24V	30	3.5	5.1	5.1	74x48x19	86	No
VA-RLDF3-100-30	W/R/G/B	3	24V	30	7.7	9.5	9.5	100x70x22	150	No
VA-RLDF3-120-30	W/R/G/B	3	24V	30	10	11.9	11.9	120x88x22	190	No
VA-RLDF3-132-15	W/R/G/B	3	24V	15	8.9	13.1	13.1	132x96x22	260	No
VA-RLDF3-150-30	W/R/G/B	4	24V	30	15.2	15.2	15.9	150x120x22	270	No
VA-RLDF3-180-30	W/R/G/B	5	24V	30	20.5	20.5	20.5	180x132x29	471	No
VA-RLDF3-208-25	W/R/G/B	3	24V	25	13.9	19.2	19.2	208x172x22	443	No
VA-RLDF3-50-00	W/R/G/B	1	24V	0	0.9	2.2	1.5	50x18x10	43	No
VA-RLDF3-75-00	W/R/G/B	1	24V	0	1.3	3.3	2.4	75x43x10	70	No
VA-RLDF3-96-00	W/R/G/B	1	24V	0	2.6	5.2	3.4	96x64x10	90	White
VA-RLDF3-120-00	W/R/G/B	1	24V	0	2.6	5.7	4.4	120x88x10	120	No
VA-RLDF3-146-00	W/R/G/B	1	24V	0	3.5	7.9	5.3	146x114x10	164	No
VA-RLDF3-176-00	W/R/G/B	1	24V	0	5.2	10	6.7	176x144x10	200	No
VA-RLDF3-206-00	W/R/G/B	1	24V	0	5.2	11.3	8.16	206x174x10	239	No

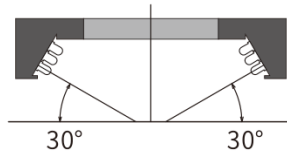
\*Tolerance +/- 10%

The information provided in this documentation contains general descriptions and/or technical characteristics of the performance of the products contained herein.

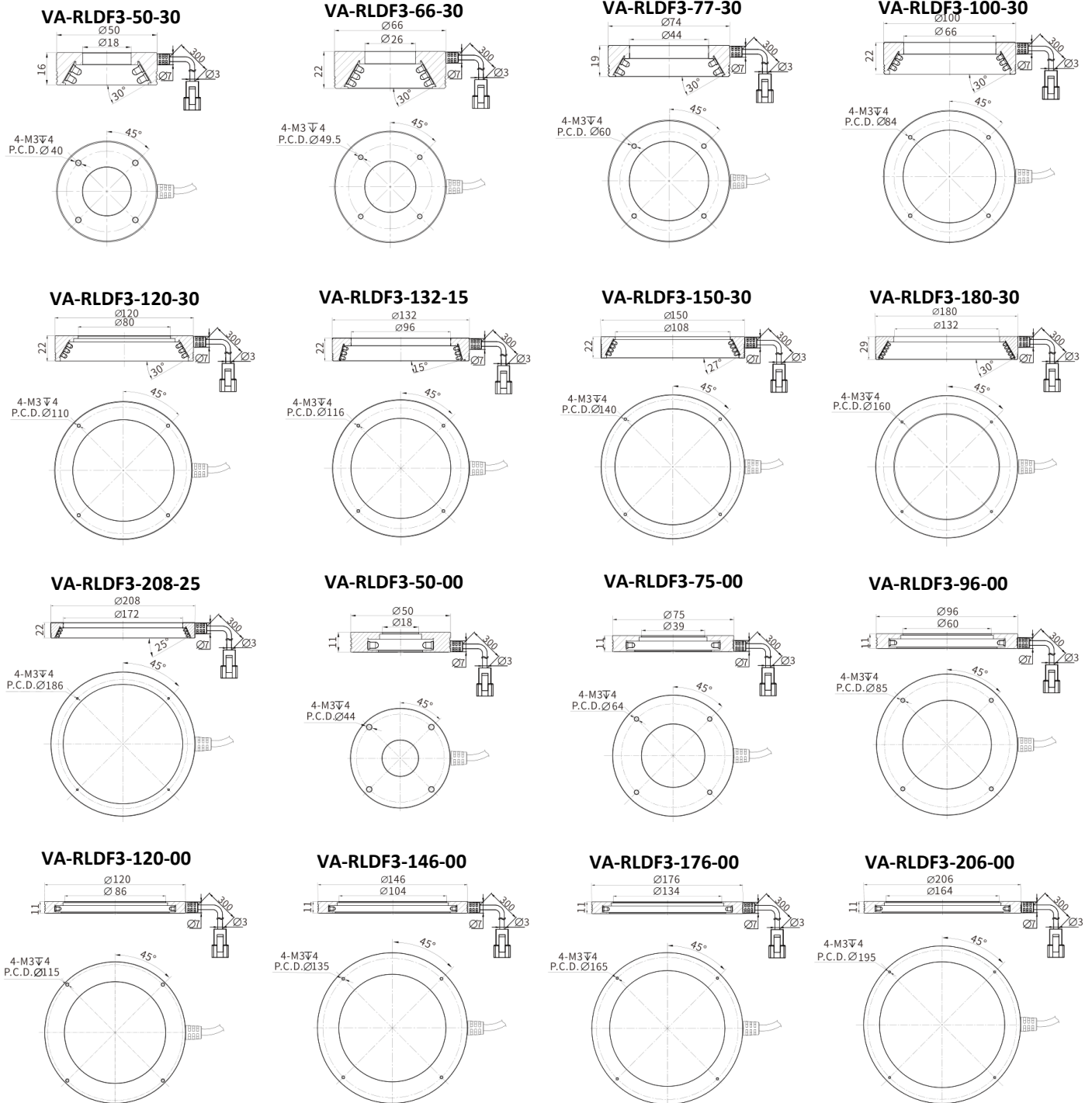
This documentation is not intended as a substituted for and is not to be used for determining suitability or reliability of these products for specific user applications.

It is the duty of any such user or integrator to perform the appropriate and complete risk analysis, evaluation, and testing of the products with respect to the relevant specific application or use thereof. Neither GeT Cameras nor any of its affiliates or subsidiaries shall be responsible or liable for misuse of the information contained herein or incorrect information in this document.

## Technical drawing



Angle means the one between the light and the horizontal plane



The information provided in this documentation contains general descriptions and/or technical characteristics of the performance of the products contained herein.

This documentation is not intended as a substituted for and is not to be used for determining suitability or reliability of these products for specific user applications.

It is the duty of any such user or integrator to perform the appropriate and complete risk analysis, evaluation, and testing of the products with respect to the relevant specific application or use thereof. Neither GeT Cameras nor any of its affiliates or subsidiaries shall be responsible or liable for misuse of the information contained herein or incorrect information in this document.

## Product number

VA- RLDF3	- Diameter	- Angle	- Color
	50	30	W
	66	25	R
	74	15	G
	.....	00	B
			IR
			UV