

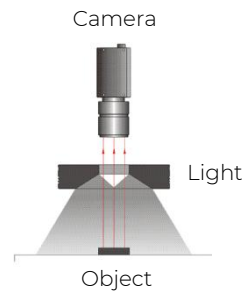
Ring Light Diffused Series

V2.2



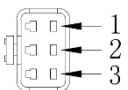
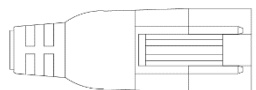
Applications

- Surface defects inspection on curved objects
- Characters inspection on labels
- Small metal object recognition



Direct illumination for reducing reflective interference.

Technical specifications

Light color	White (W)	6500 – 8500K
	Red (R)	620 – 630nm
	Green (G)	520 – 530nm
	Blue (B)	460 – 475nm
	Infrared (IR)	On request
	Ultraviolet (UV)	On request
Connector	JST-SMR-03V-B (FCB-3)	 
		1 : +24V 2: NC 3: GND
Operating environment	Temperature	0~40 °C
	Humidity	20~85 %
Certification	CE / RoHS	
Accessories	VA-CABLE-MVL-FCB3-1m	1 meter extension cable
	VA-CABLE-MVL-FCB3-3m	3 meter extension cable
	VA-CABLE-MVL-FCB3-OE-3m	3 meter open end cable
	VA-CABLE-MVL-FCB3-5m	5 meter extension cable
Compatible Power Supply (Dimmable/ Trigger)	VA-PS2-A4-60W-24V	Analog 4 Channel / 24V / Total 60W / Max. 36W per channel
	VA-PS2-A2-150W-24V	Analog 2 Channel / 24V / Total 150W / Max. 72W per channel
	VA-PS2-A4-150W-24V	Analog 4 Channel / 24V / Total 150W / Max. 48W per channel
	VA-PS5-D4-150W-24V	Digital 4 Channel / 24V / Total 150W / Max. 72W per channel



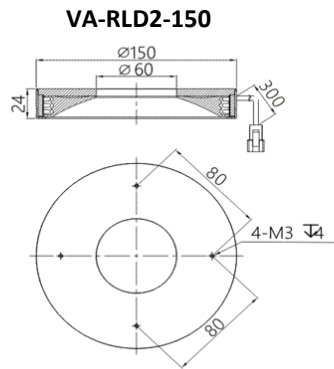
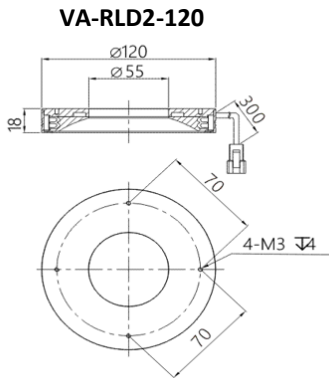
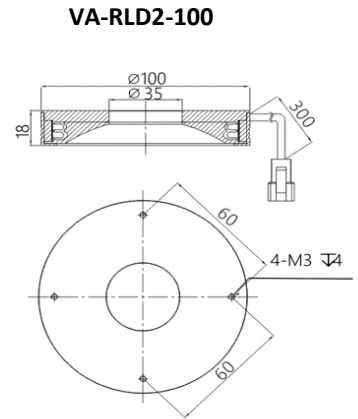
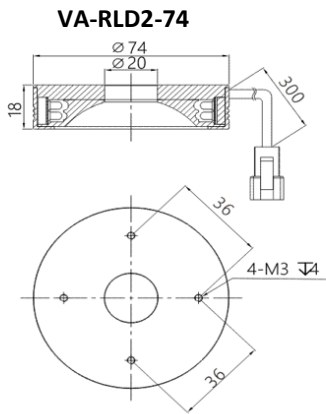
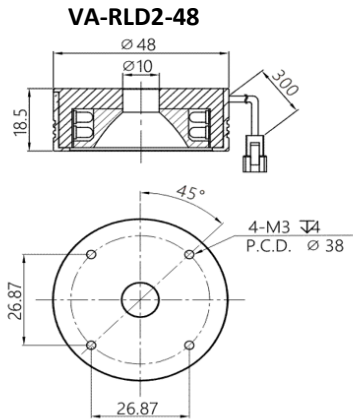
The information provided in this documentation contains general descriptions and/or technical characteristics of the performance of the products contained herein. This documentation is not intended as a substituted for and is not to be used for determining suitability or reliability of these products for specific user applications. It is the duty of any such user or integrator to perform the appropriate and complete risk analysis, evaluation, and testing of the products with respect to the relevant specific application or use thereof. Neither GeT Cameras nor any of its affiliates or subsidiaries shall be responsible or liable for misuse of the information contained herein or incorrect information in this document.

Product table

Model	Color ○ ● ● ●	Voltage	Power (R)*	Power (W/B/G)*	Dimensions (mm)	Weight (gram)	Express Stock
VA-RLD2-48	W/R/G/B	24V	2.5	3.4	48x10x18.5	60	No
VA-RLD2-74	W/R/G/B	24V	3.6	6.3	74x20x18	110	No
VA-RLD2-100	W/R/G/B	24V	7.4	9.7	100x35x18	170	White
VA-RLD2-120	W/R/G/B	24V	9.9	12.7	120x55x18	250	No
VA-RLD2-150	W/R/G/B	24V	15.0	20.2	150x60x24	400	No

*Tolerance +/- 10%

Technical drawing



Product number

VA – RLD2	-	Emitting surface	-	Color
		48		W
		74		R
		100		G
		120		B
		150		IR
				UV