



Quick guide GIP-H265-2.1MP-CP2-3.3MM

How to setup the IP stream camera to acquire a first stream



The information provided in this documentation contains general descriptions and/or technical characteristics of the performance of the products contained herein. This documentation is not intended as a substituted for and is not to be used for determining suitability or reliability of these products for specific user applications. It is the duty of any such user or integrator to perform the appropriate and complete risk analysis, evaluation, and testing of the products with respect to the relevant specific application or use thereof. Neither GeT Cameras nor any of its affiliates or subsidiaries shall be responsible or liable for misuse of the information contained herein or incorrect information in this document.



Table of Contents

Introduction	3
Preparations	3
First connection	3
Quick function overview	4
Settings	5
How to change the IP settings via ODM	5
How to change credentials	6
Access the livestream via Real Time Streaming Protocol	7
Revision history	9

The information provided in this documentation contains general descriptions and/or technical characteristics of the performance of the products contained herein. This documentation is not intended as a substituted for and is not to be used for determining suitability or reliability of these products for specific user applications. It is the duty of any such user or integrator to perform the appropriate and complete risk analysis, evaluation, and testing of the products with respect to the relevant specific application or use thereof. Neither GeT Cameras nor any of its affiliates or subsidiaries shall be responsible or liable for misuse of the information contained herein or incorrect information in this document.

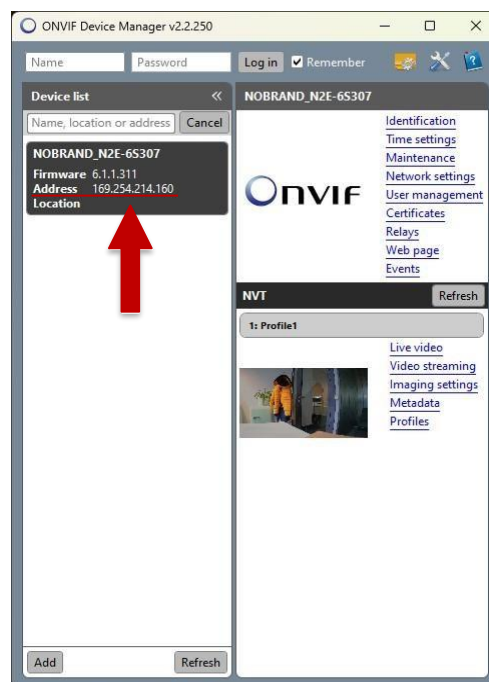
Introduction

This Quick Guide provides a brief introduction on the GIP-H256-2.1MP-CP2-3.3MM software features and how to establish a first connection. In addition, it is described how to use 3rd party software to view the image stream and change basic parameters like the IP setting.

Preparations

In order to quickly access the cameras IP address and establish a first connection, the ONVIF Device Manager (ODM) is used.

1. Download and install ODM, available in our download area. (<https://www.get-cameras.com/requestdownload>)
2. Connect the camera to your computer, use a PoE switch if your computer does not support Power over Ethernet.
3. After the program was successfully installed, open ONVIF Device Manager.
4. Available cameras in the network will be displayed automatically.



5. The cameras IP address is visible right away in the device list. Copy it to clipboard or note it.
6. Close ODM

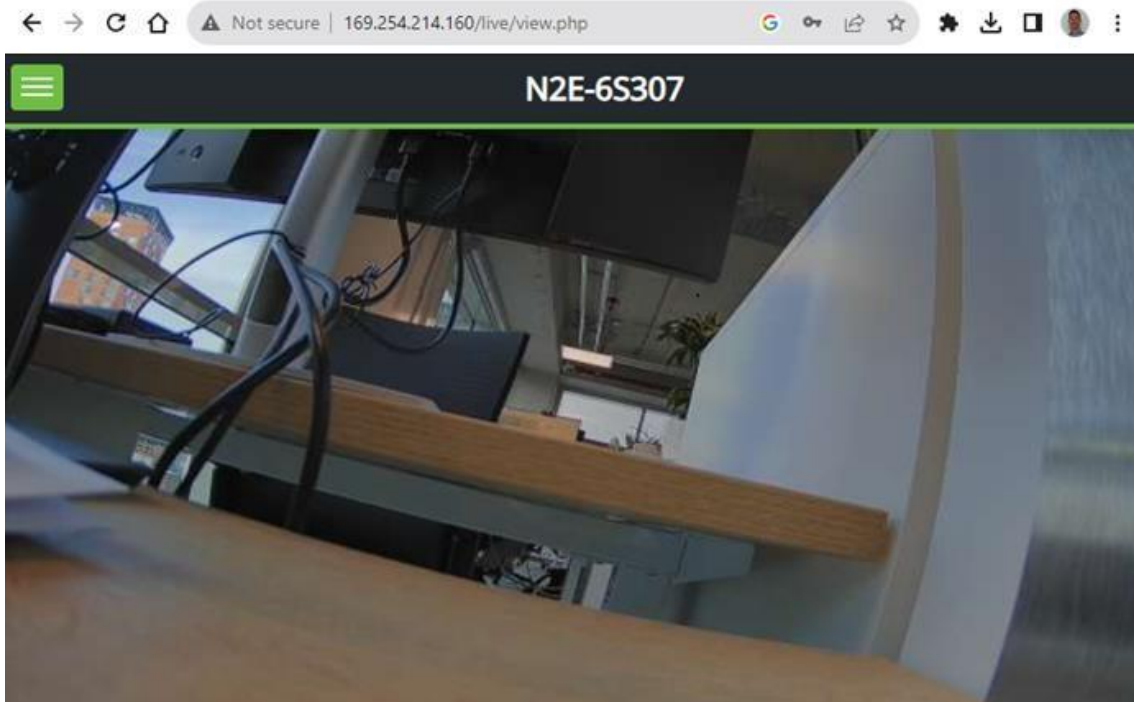
First connection

The first connection is straightforward:

1. open your web browser
2. type or copy the address of the camera
3. Type in credentials:
 - Username: admin
 - Password: admin1357
4. You can now control the camera and view the livestream

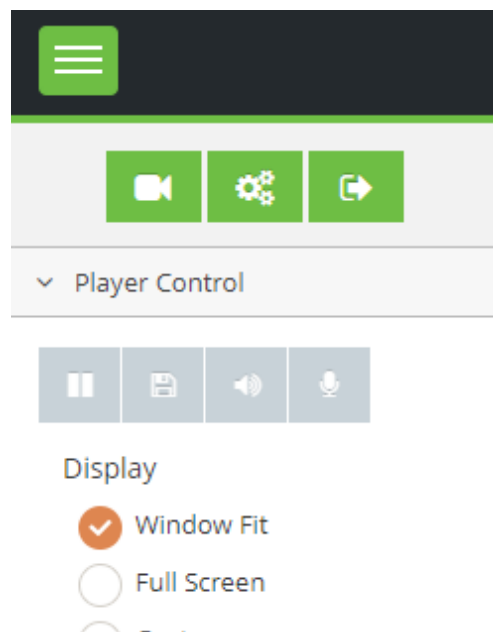
Quick function overview

The web client will display an image stream right away. The icon in the top left corner will display a settings menu.



In the settings menu one can choose between:

- a) Player Control (camera symbol, left)
- b) Settings (gear symbol, middle)
- c) Log out (arrow symbol, right)

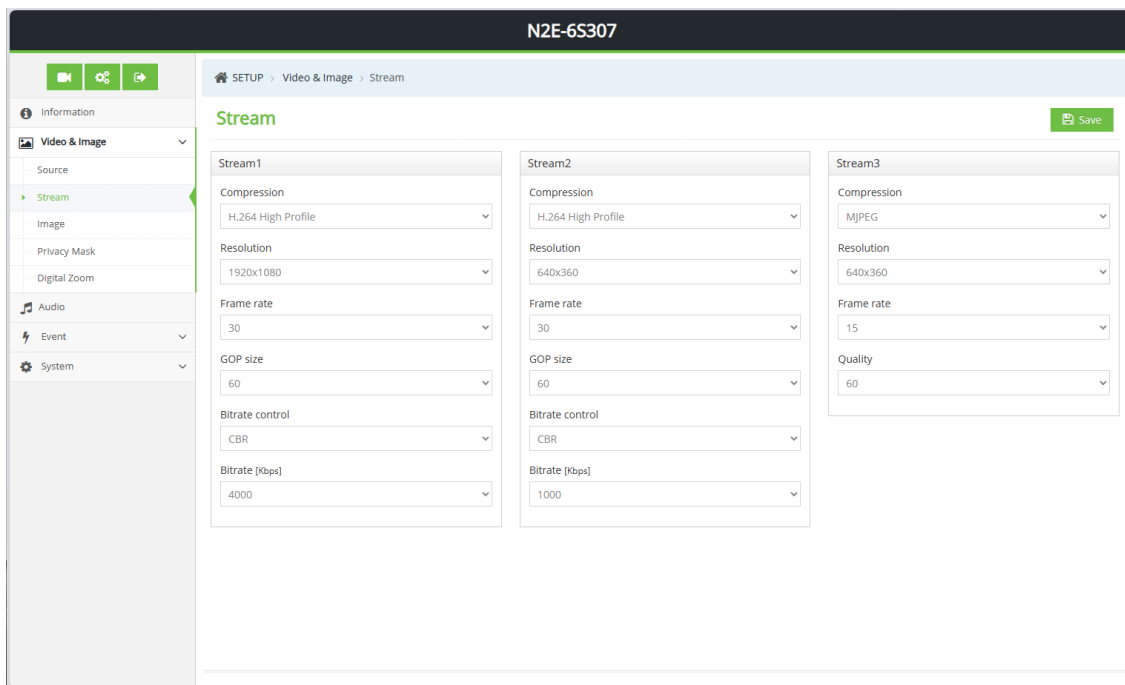


Settings

The majority of settings are self-explaining and are applied after clicking “Save”.

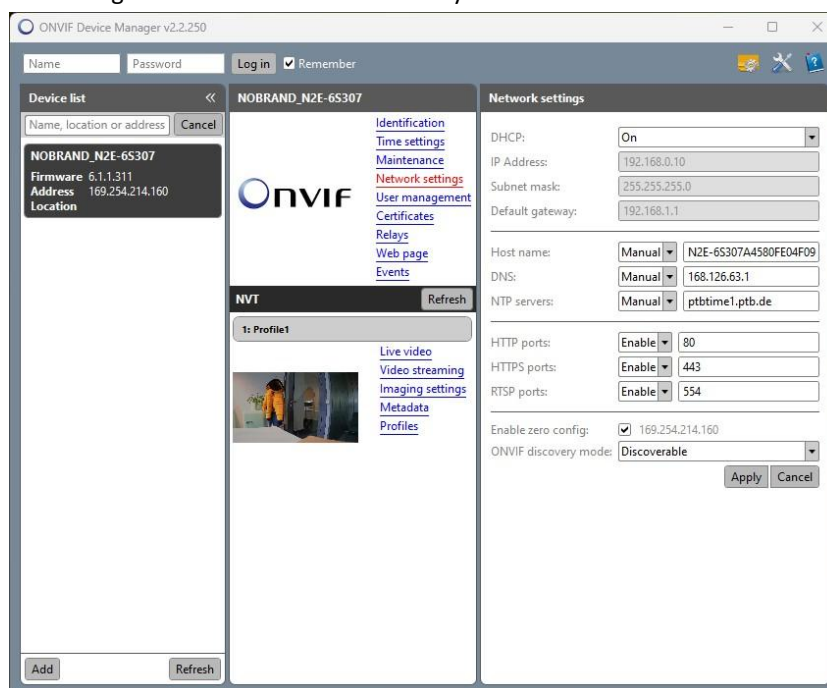
E.g.: The live stream parameters can be adjusted in the submenu Video & Image -> Stream.

Here one can edit compression mode, resolution and frame rate, as well as stream parameters like bitrate and bitrate mode (CBR or VBR).



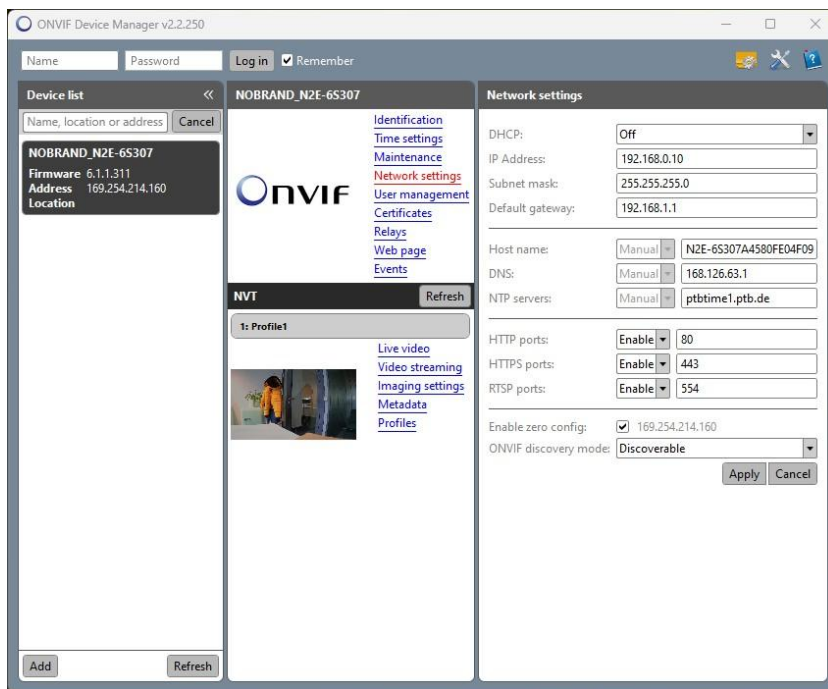
How to change the IP settings via ODM

1. open the ONVIF Device Manager
2. navigate to Network settings. The camera is set to DHCP by default.



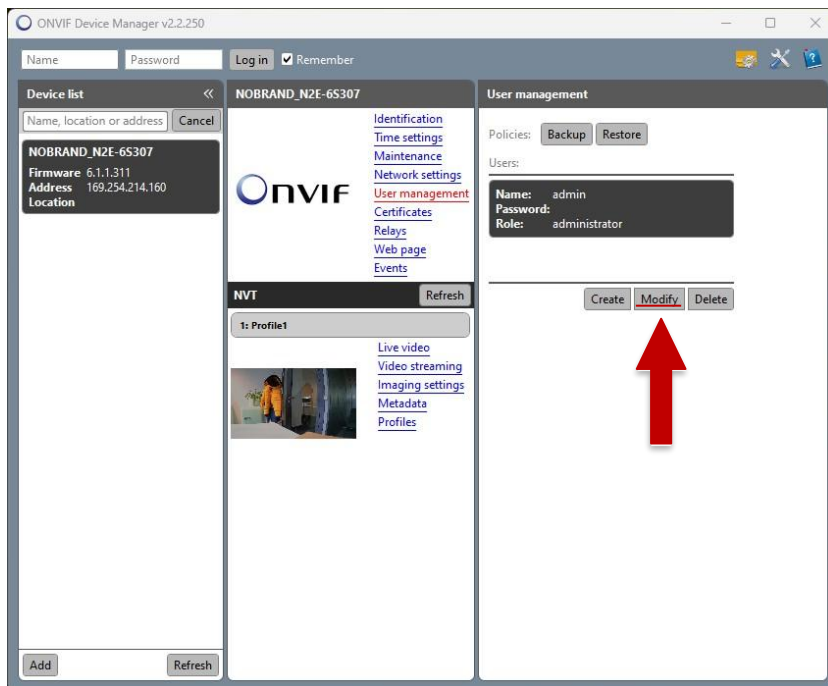
The information provided in this documentation contains general descriptions and/or technical characteristics of the performance of the products contained herein. This documentation is not intended as a substituted for and is not to be used for determining suitability or reliability of these products for specific user applications. It is the duty of any such user or integrator to perform the appropriate and complete risk analysis, evaluation, and testing of the products with respect to the relevant specific application or use thereof. Neither GeT Cameras nor any of its affiliates or subsidiaries shall be responsible or liable for misuse of the information contained herein or incorrect information in this document.

- For a static IP address, change DHCP to Off and enter the desired IP configuration:



How to change credentials

- open the ONVIF Device Manager
- navigate to User management.
- By default, only the administrator is configured.
- Click on Modify to change the password.



- Via the button Create, you can generate users with different rights.

The information provided in this documentation contains general descriptions and/or technical characteristics of the performance of the products contained herein. This documentation is not intended as a substituted for and is not to be used for determining suitability or reliability of these products for specific user applications. It is the duty of any such user or integrator to perform the appropriate and complete risk analysis, evaluation, and testing of the products with respect to the relevant specific application or use thereof. Neither GeT Cameras nor any of its affiliates or subsidiaries shall be responsible or liable for misuse of the information contained herein or incorrect information in this document.

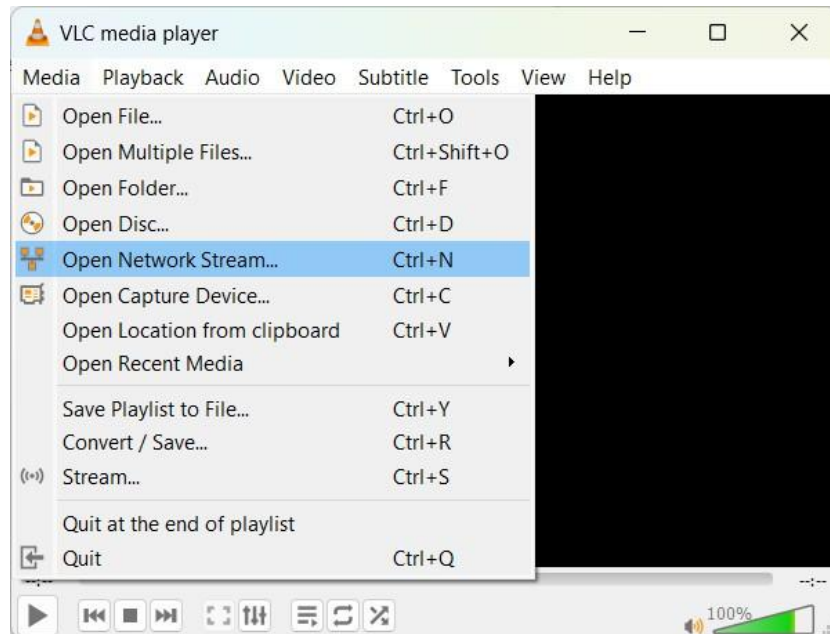
Access the livestream via Real Time Streaming Protocol

The Real Time Streaming Protocol (RTSP) is an easy way to display the video stream.

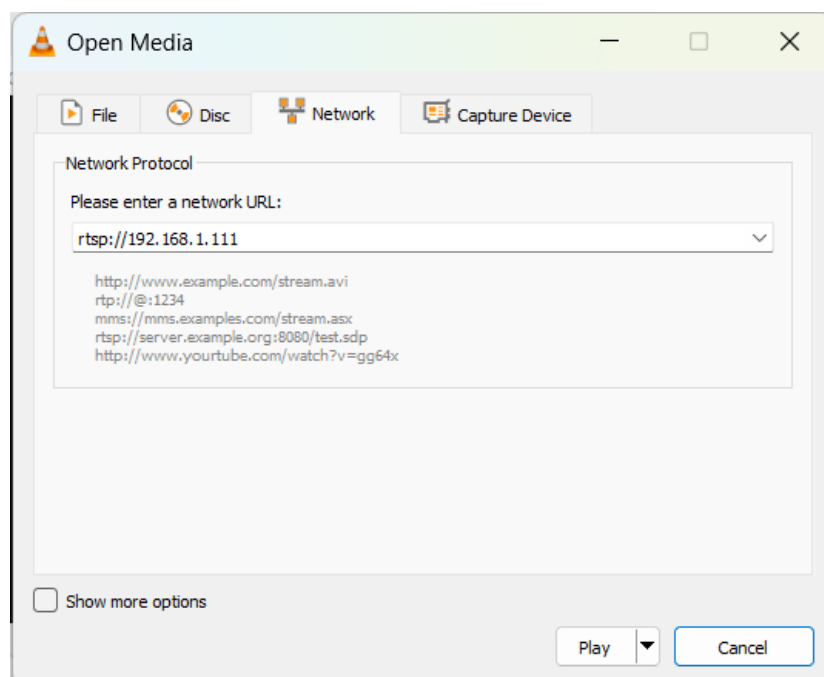
Once the video stream settings are configured, the stream is started every time the camera is powered.

To open the livestream via RTSP, one can use a variety of programs. Such as specialized recording software or open source media players.

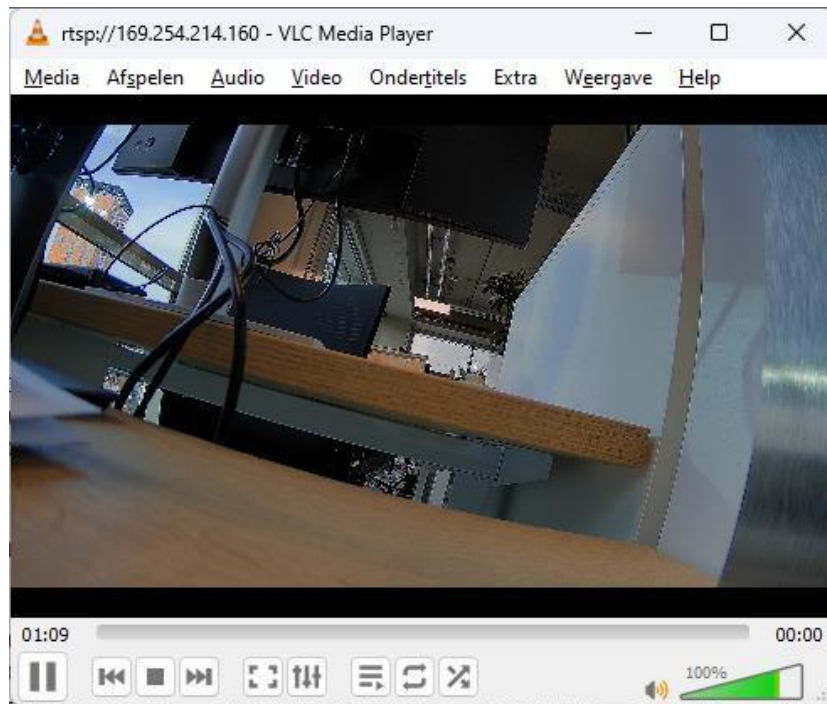
For example, the free to use VLC player can be used for this purpose. Open the VLC player and navigate to Media -> Open Network Stream...



A new popup window will appear. Enter the cameras IP address after rtsp:// and click play.



The cameras image stream will be displayed right away:



Revision history

Revision	Information
1.0	Initial publication
2.0	Branding updates